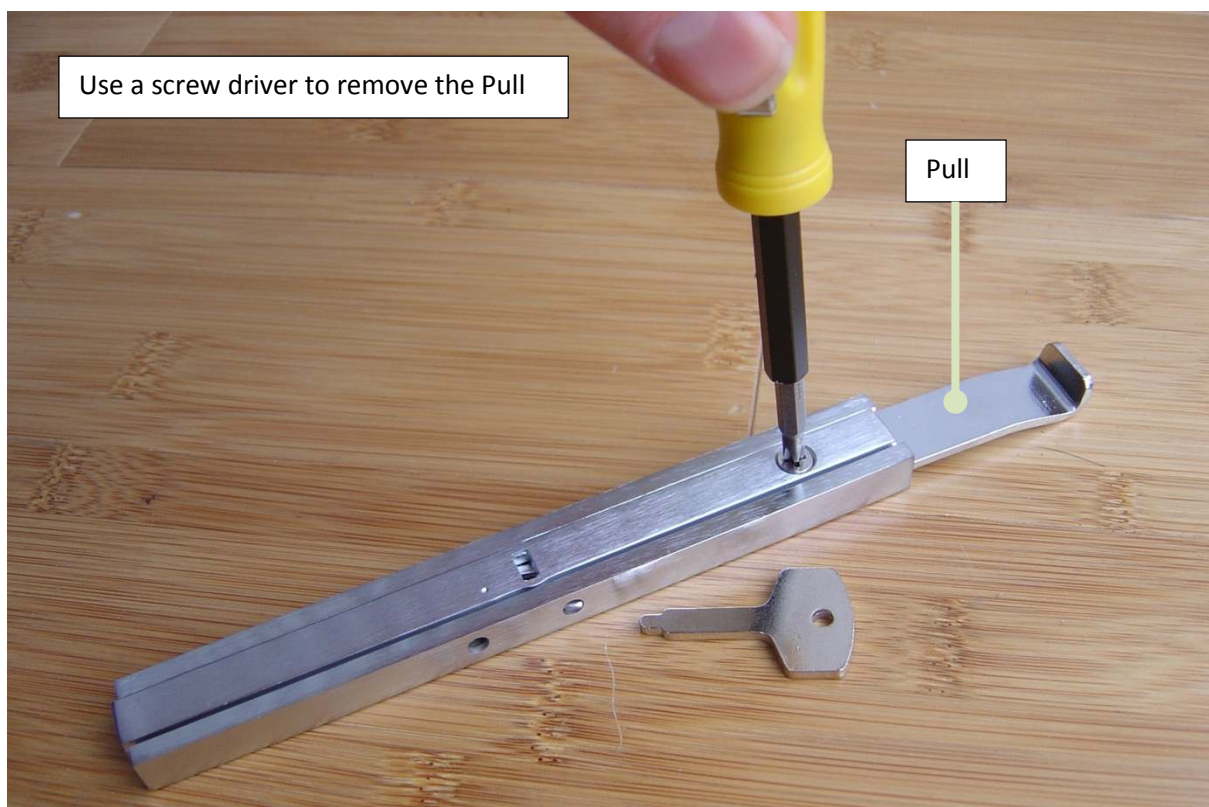
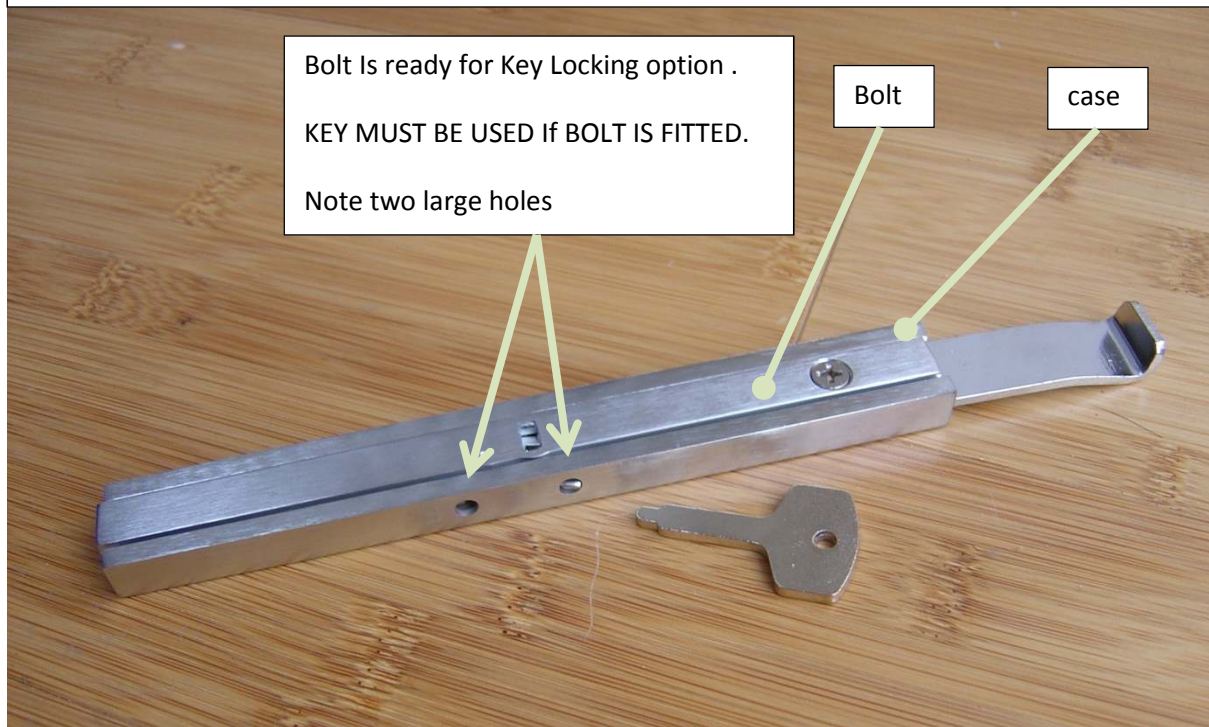


B85C & F Locking/Non-Locking Bolt. Instructions for Use

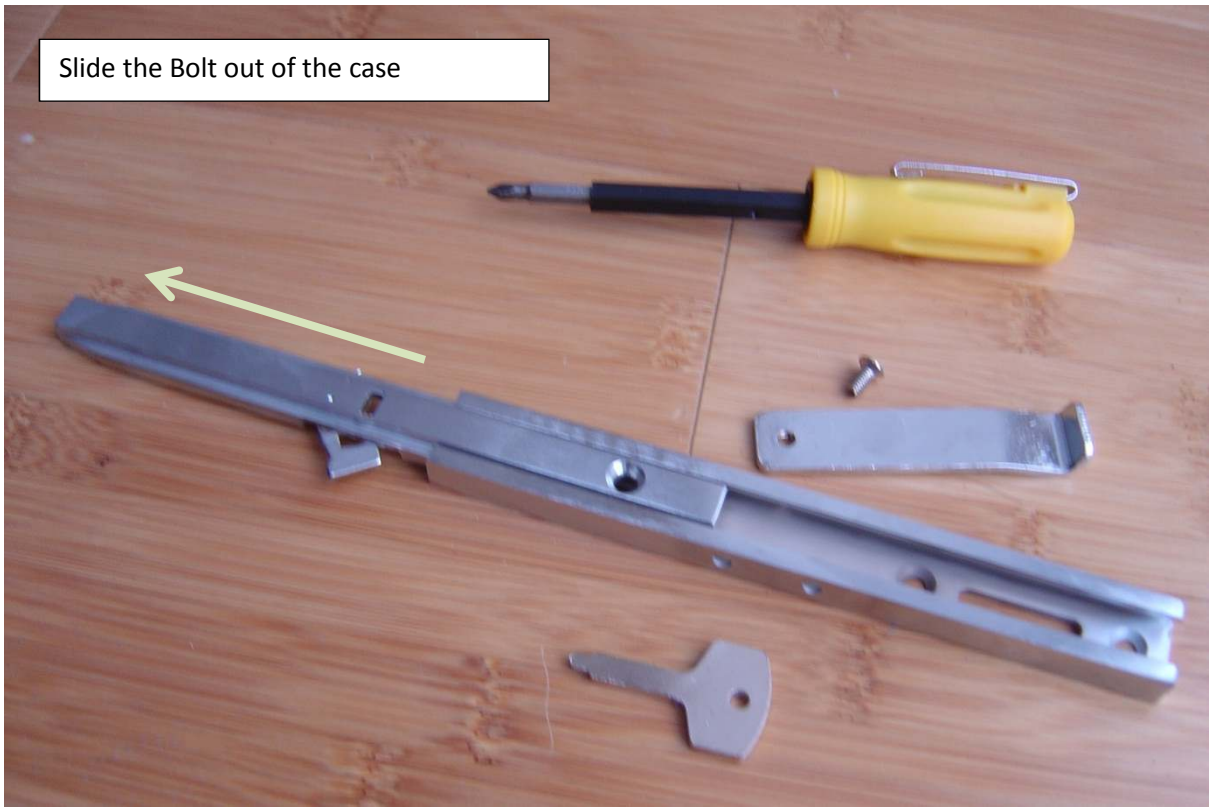
(B85C shown)

The B85C & F has two Options -1) Key Locking or 2) non-locking where the key is not required. Before fitting the bolt to the Door/Window, the user needs to decide which Option they require.

The Options can be changed by simply rotating the bolt 180 degrees to the case



Slide the Bolt out of the case



Rotate the case 180 degrees

