

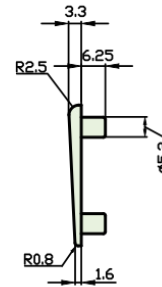
PRODUCT FEATURES & TECHNICAL INFORMATION

- Tapered natural brass wedge for open out windows
- Available in different sizes to suit different window profiles and configurations.
- Most wedges available in both short and long fixing 'legs'
- To calculate the wedge height, the distance between the moving and fixed leaf is required. Our 'nose height' from the base of 4 hole back-plate to underside of nose of handle which dives up the wedge is 10mm. As an example if you have 5mm height you would need a 5mm wedge (5+5=10) *Please note the 'nose height' from the base of a 2 hole backplate is reduced to 6.5mm*

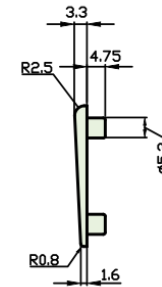
Window Handle Wedge (Strike Plate)



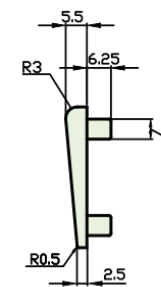
B557 (3L)
3mm thick 6.25mm
legs (long legs)



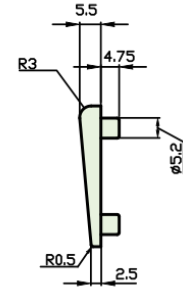
B558 (3S)
3mm thick 4.75mm
legs (short legs)



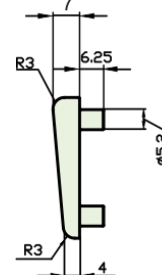
B651 (5L)
5mm thick 6.25mm
legs (long legs)



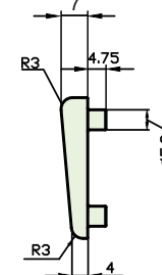
B650 (5S)
5mm thick 4.75mm
legs (short legs)



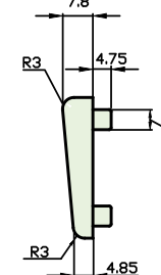
B556 (6L)
6mm thick 6.25mm
legs (long legs)



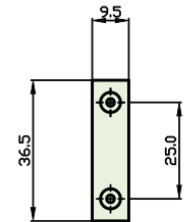
B555 (6S)
6mm thick 4.75mm
legs (short legs)



B559 (7S)
7mm thick 4.75mm
legs (short legs)



All Wedges



Dimensions

Example of 'Short' and 'Long' legged wedge